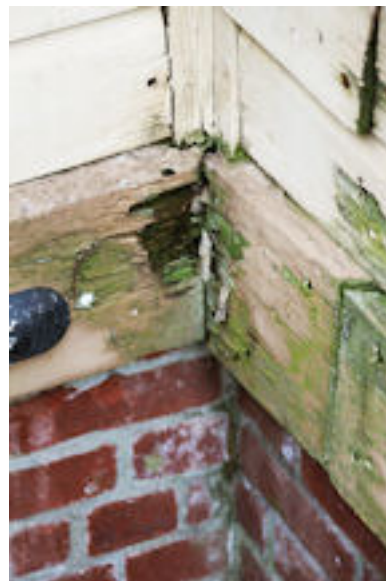
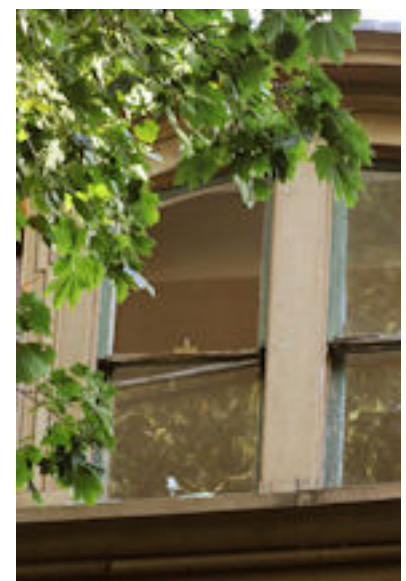




Left: Weather beaten and deteriorated window sashes, soffits and brackets on Widow's Walk  
Above: Peeling decorative trim



Above: Delaminating clapboards and exposed corner boards  
Near right: Wall junction showing rotted and separated siding trim  
Far right: Rotted ballister



Windows and sills: Typical weather damaged and exposed windowsill and trim; separated boards and braces